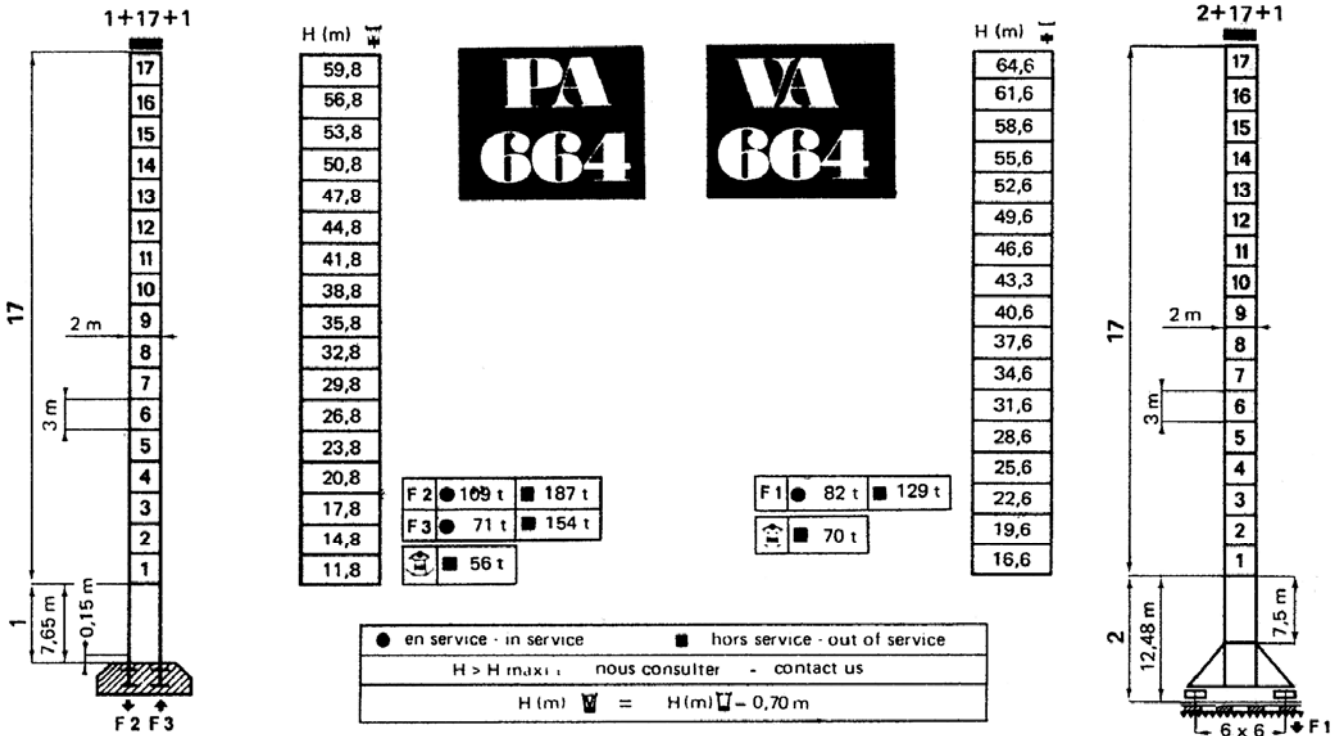
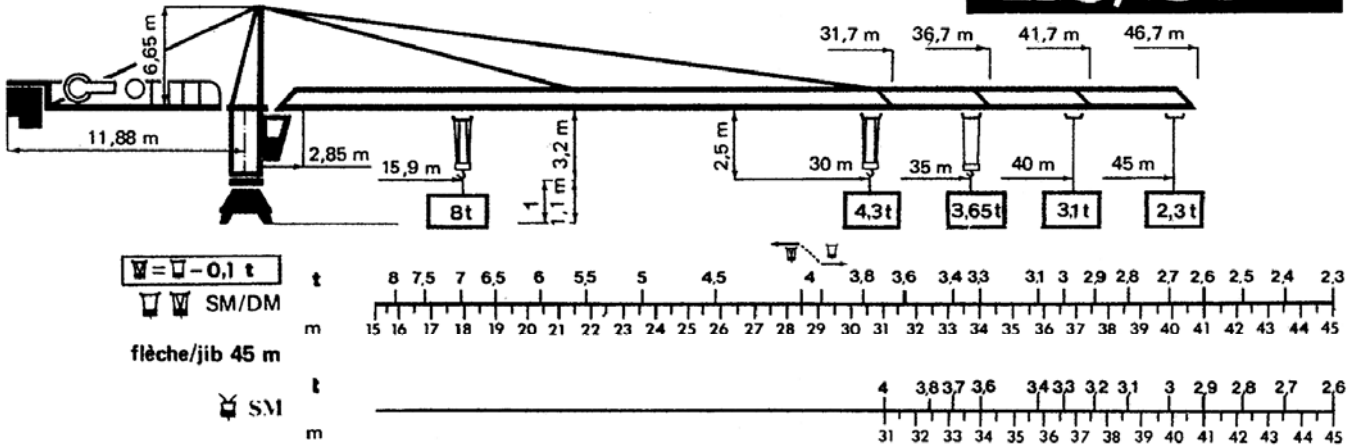




F2/23A

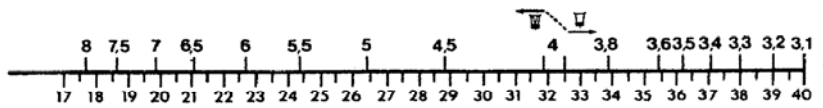


	m / mn	t	capacité maxi maxi capacity
33 PC 20 33 ch/hp		58	2
		29	4
		5,4	4
		29	4
		14,5	8
		2,7	8
45 RCS 20 45 ch/hp		80	2
		40	4
		40	4
		20	8

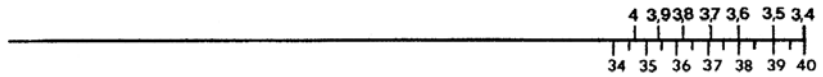
	OMD 30 L	0 → 0,9 tr/mn rpm	8 ch/hp
	RCC 63	0 → 60 m/mn	7 ch/hp
	RT 544	22 m/mn	4 x 4 ch/hp
	• RTTP 645	27 m/mn	4 x 5 ch/hp
	• RCT 646	12/60 m/mn	4 x 6,5 ch/hp
R mini : 12 m	• normal - normal	•• rapide - fast	H ≤ 2+10+1
	réseau - mains supply		groupe électrogène generator unit
	①	50 KVA	
	②	60 KVA	

Flèche Jib 40m

$W = W - 0,1 t$
SM/DM



SM

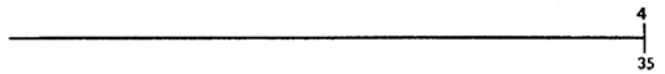


Flèche Jib 35m

$W = W - 0,1 t$
SM/DM

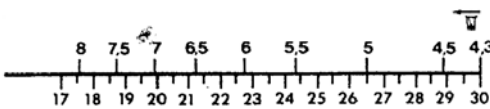


SM

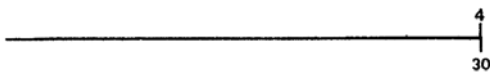


Flèche Jib 30m

$W = W - 0,1 t$
SM/DM



SM



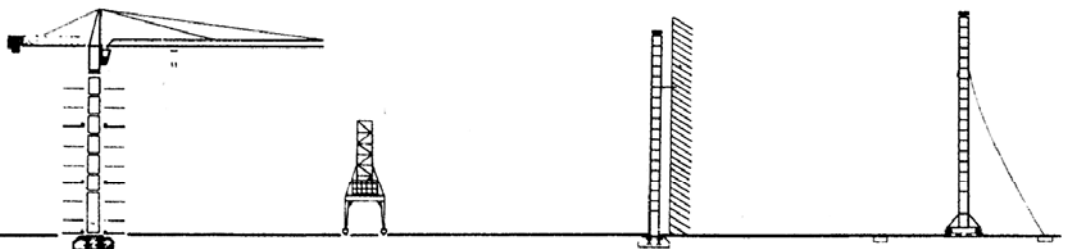
réactions données flèche la plus longue, hauteur maxi sous crochet

reactions are indicated with longest jib and maxi height under hook

hauteur sous crochet théorique: obtenue flèche horizontale garde fin de course de 0,70 m entre moufle et chariot

hook height theoretical: obtained horizontal jib limit switch protection distance of 0,70 m between pulley and trolley

implantations spéciales:
nous consulter
special mounting possibilities:
consult us



Potain

B.P. 173 - F 69130 ECULLY - Route de Charbonnières
Tél. (78) 33.81.81+ - Télex 330179

AGENCES:
Paris - Lyon - Marseille - Rennes - Strasbourg - Toulouse - Nancy

EXPORT: 89, Avenue du Président Roosevelt
F 94150 CHEVILLY-LARUE - Tél. (1) 687.22.23 - Télex 270001

Modifications réservées
Subject to modifications