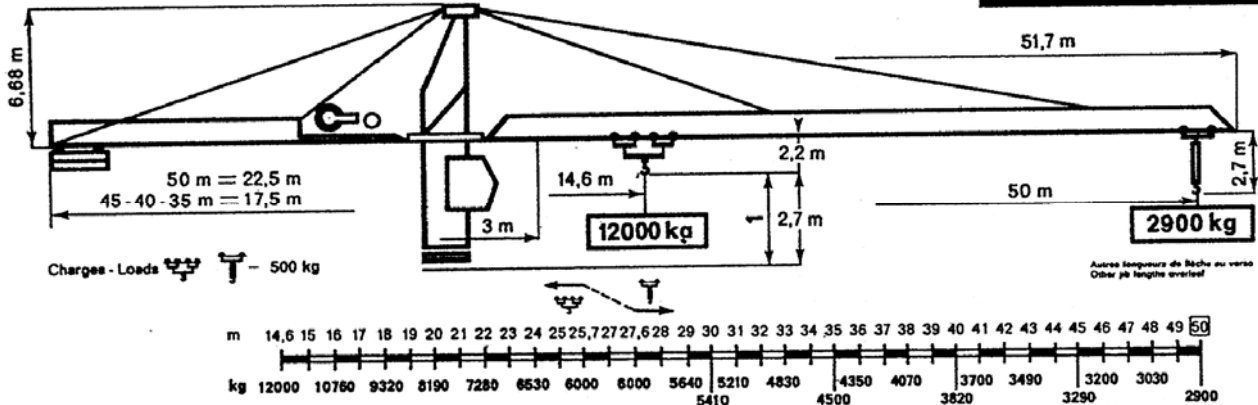




Potain

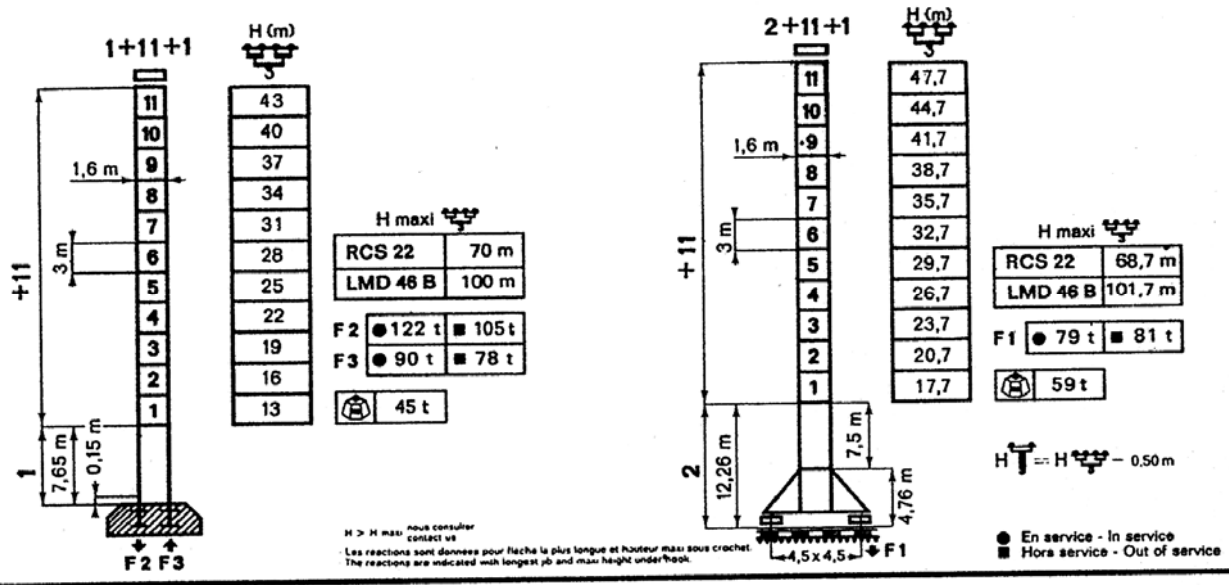
TOPKIT

F3/29



PA-459

SA-472



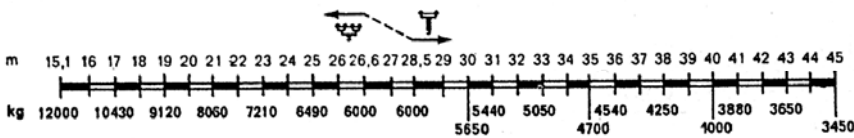
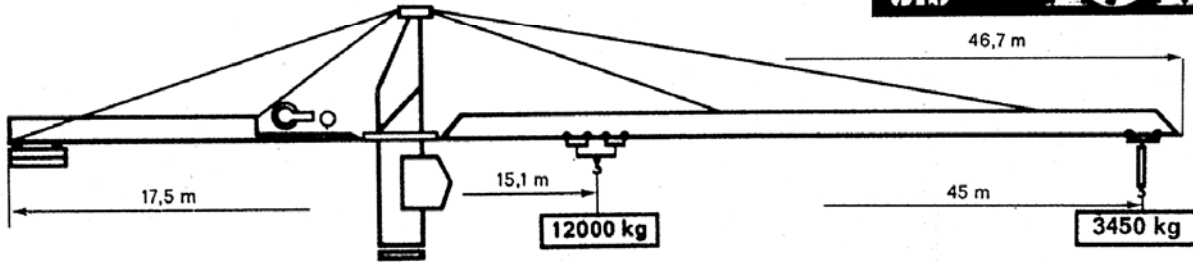
		m/mn	kg
① RCS 22 45 ch/hp		0 → 56	3000
		0 → 28	6000
		0 → 28	6000
		0 → 14	12000
② LMD 46 80 ch/hp		0 → 100	3000
		0 → 50	6000
		0 → 200	1500
		0 → 50	6000
		0 → 25	12000
		0 → 100	3000

	OMD 55	0 → 0,8 tr/mn rpm	2x8 ch/hp
	① DMD 30	12t 0 → 60 m/mn	8 ch/hp
	② DMD 35	6t 0 → 100 m/mn 12t 0 → 50 m/mn	8 ch/hp
	RT 425	25 m/mn	2x5 ch/hp
	RTT 545	23 m/mn	4x5 ch/hp
	RCT 546	10-50 m/mn	4x6,5 ch/hp

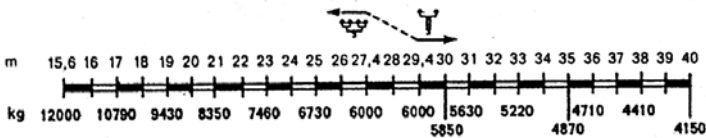
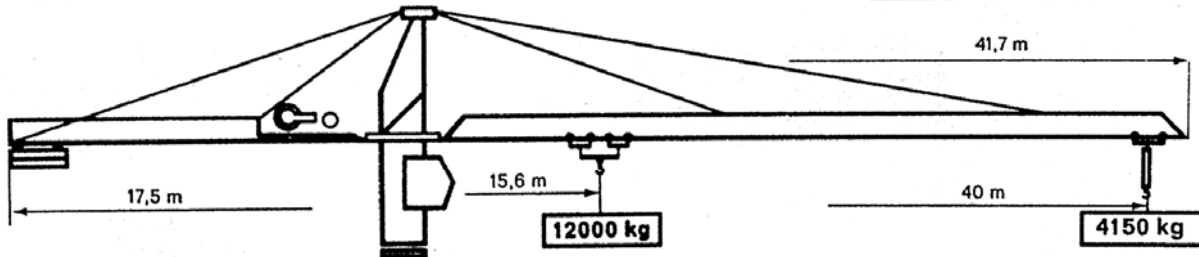
● Normal - Normal
●● Rapide - Fast HC2+4+1

380V-50Hz	Réseau Mains supply	Groupe électrogène Generator unit
	① 75 KVA	nous consulter consult us
	② 120 KVA	

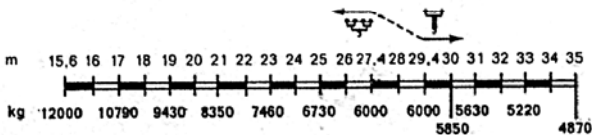
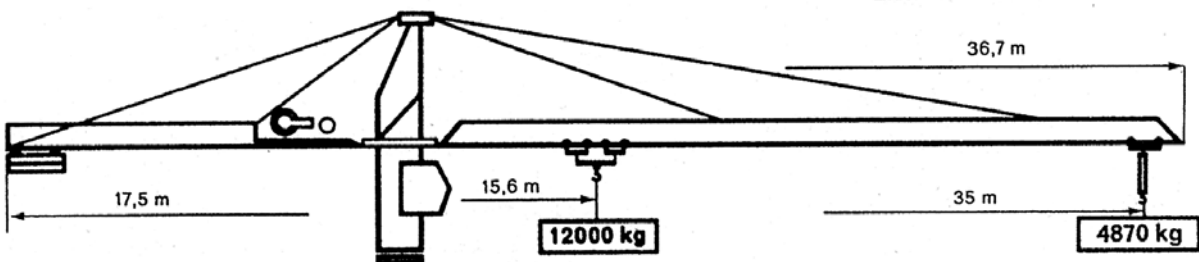
Flèche Jib 45 m



Flèche Jib 40 m



Flèche Jib 35 m



Potain

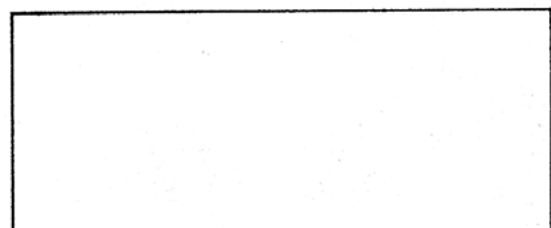
B.P. 173 - F 69130 ECULLY - Route de Charbonnières
Tél. (78) 33.81.81 + - Télex 330179

AGENCES :

Paris - Lyon - Marseille - Rennes - Strasbourg - Toulouse - Nancy

EXPORT : 89, Avenue du Président Roosevelt

F 94150 CHEVILLY-LARUE - Tél. (1) 687.22.23 - Télex 270001



Subject to modification