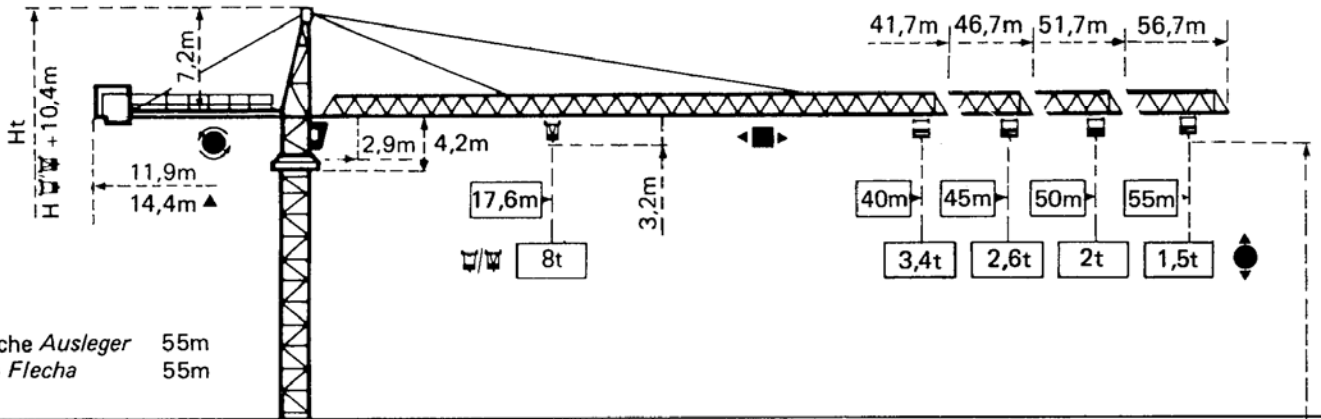


POTAIN TOPKIT G20/15C

Cotes Abmessungen Dimensions Dimensiones



▲ Flèche Ausleger 55m
▲ Jib Flecha 55m

Mătore Mast Mast Mástil
□ 1,6m x 1,6m

Mătore Mast Mast Mástil
□ 2m x 2m

PA459

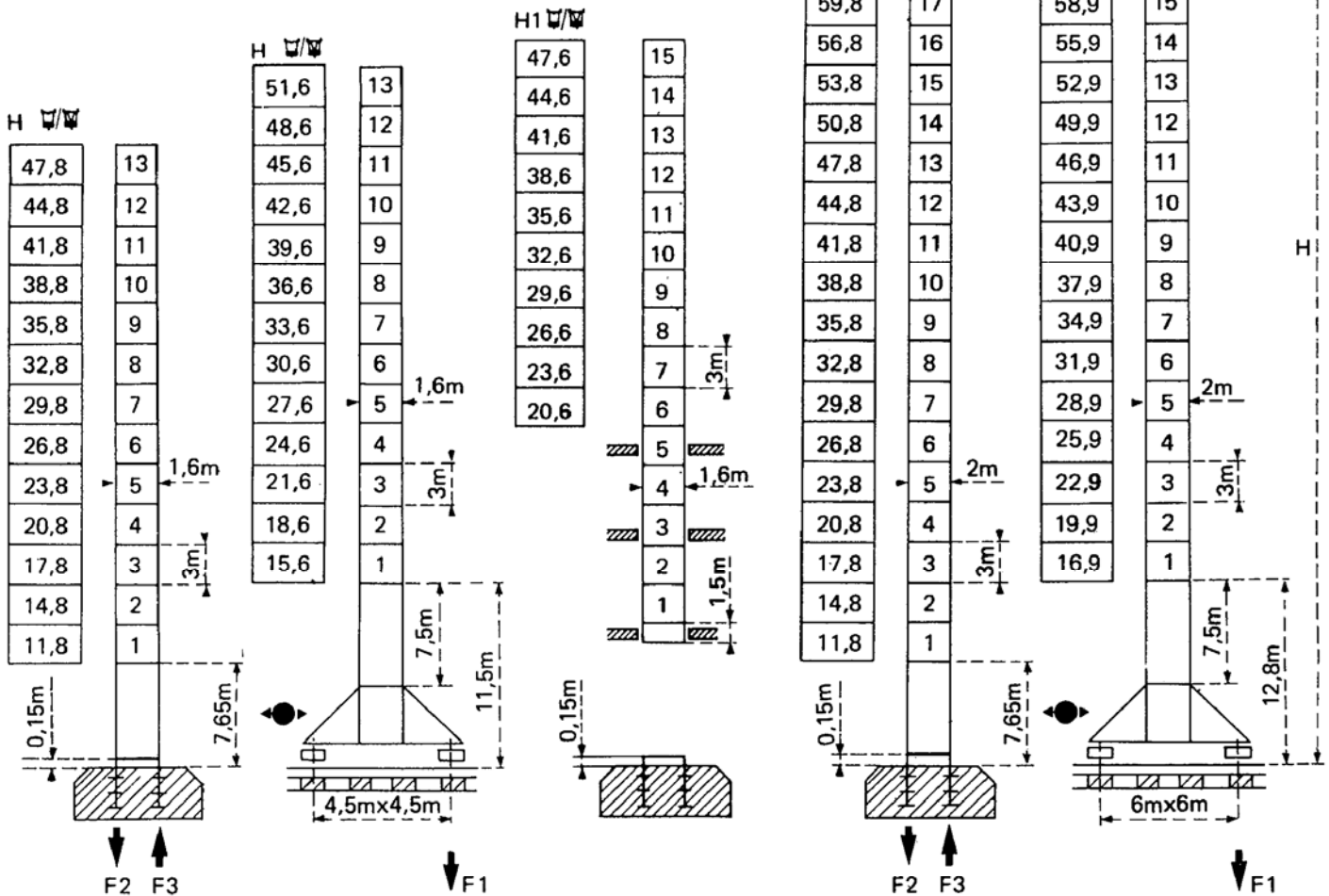
SB459

BA45A


PA663


VB663

$$H_{\square} = H_{\square/\square} + 0,7m$$





F = Réactions Eckdrücke Reactions Reacciones

F2	● 102t	■ 130t
F3	● 70t	■ 103t
	39t	

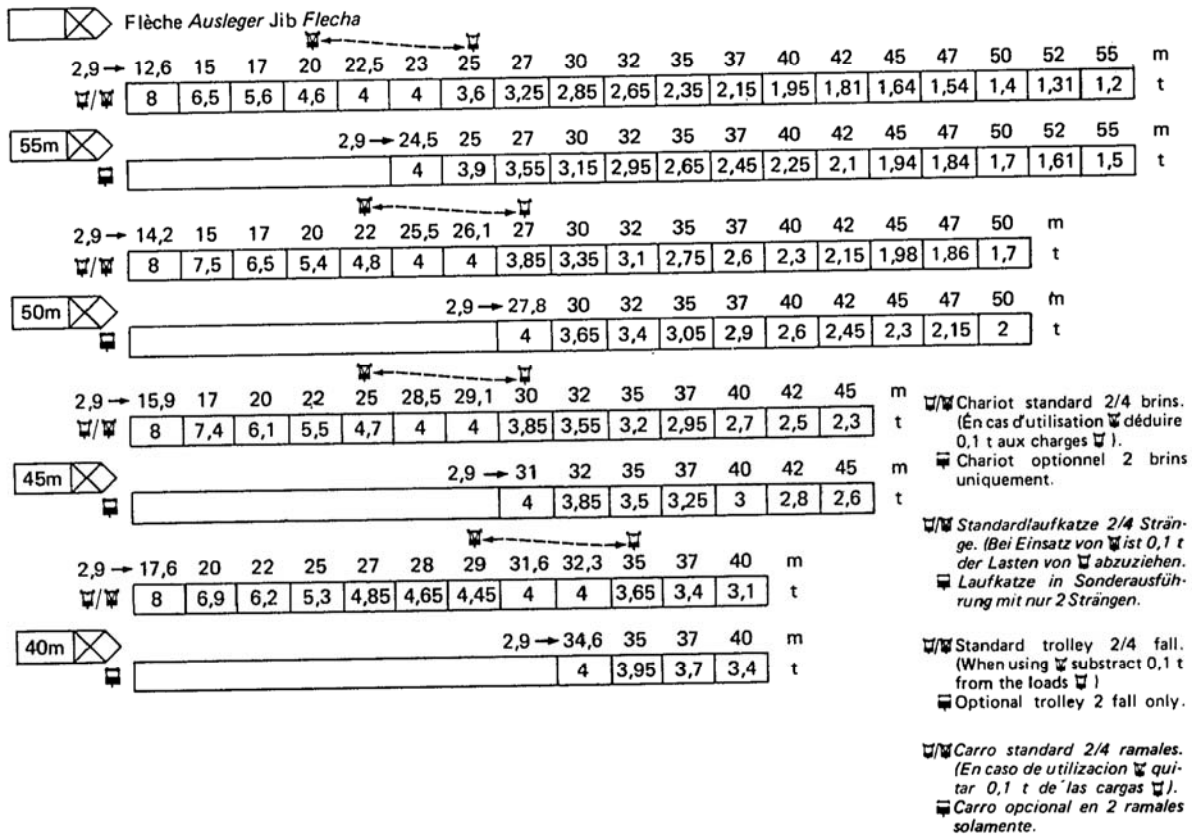
F1	● 76t	■ 94t
	47t	

Voir ci-contre
Siehe nebenstehend
See opposite
Ver página opuesta

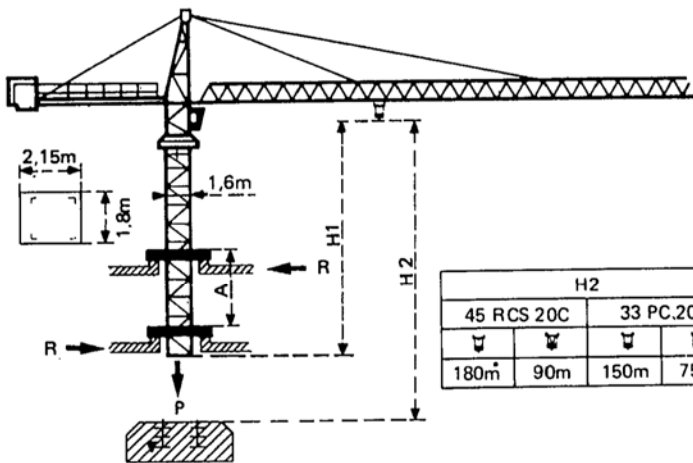
F2	● 108t	■ 165t
F3	● 69t	■ 132t
	49,5t	

F1	● 86t	■ 115t
	62,5t	

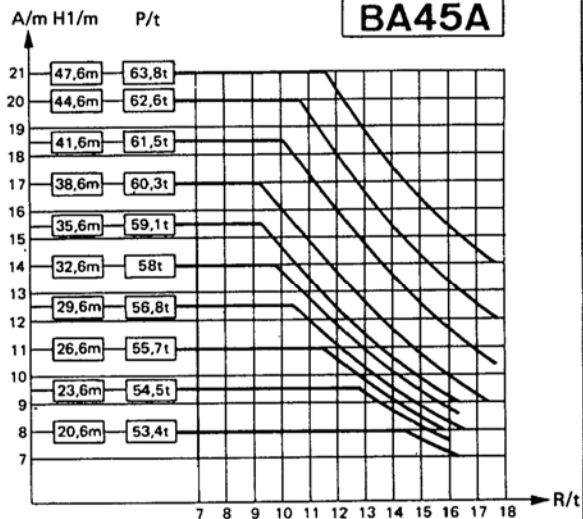
Courbes de charges Lastkurven Load diagrams Curvas de cargas



Télescopage sur dalles - Ketterkrane im Gebäude Climbing crane - Telecopage gruas trepadoras



H2			
45	RCS 20C	33	PC.20C
☒	☒	☒	☒
180m	90m	150m	75m
























A Distance entre cadres A Abstand zwischen den Rahmen A Distance between collars A Distancia entre marcos
 H1 Hauteur grue H1 Kranhöhe H1 Crane height H1 Altura grúa
 P Poids de la grue P Krangewicht P Crane weight P Peso de la grúa (En servicio)
 R Réaction horizontale R Horizontalkräfte R Horizontal reaction R Reacción horizontal

● En service ● In Betrieb ● In service ● En servicio
 ■ Hors service ■ Ausser Betrieb ■ Out of service ■ Fuera de servicio
 ☒ A vide sans lest avec ☒ Ohne Last und Ballast ☒ Without load and ballast ☒ Sin cargas, sin lastre con
 flèche et hauteur maximum. mit Maximalausleger und Maximalhöhe. with longest jib and maximum height. flecha altura máxima.

POTAIN TOPKIT G20/15C

Mécanismes *Antriebe* Mechanisms *Mecanismos*

				m/min	t		ch-PS hp	kW	
Levage <i>Heben</i> Hoisting <i>Elevación</i>	45 RCS 20 C 			0 → 40	4	361 m > 361 m	45	33	
				0 → 80	2				
				0 → 20	8				
				0 → 40	4				
	33 PC 20 C 			5,4	4	299 m > 299 m	33	24	
				30	4				
				60	2				
				2,7	8				
				15	8				
				30	4				
	Distribution - <i>Katzfahren</i> Trolleying - <i>Distribución</i>		6 DPC 4	7,5 30 60				6	4,4
	Orientation - <i>Schwenken</i> Slewing - <i>Orientación</i>		OMD	0 → 0,7 tr/min U/min-rpm				8	5,9
Translation <i>Kranfahren</i> Travelling <i>Traslación</i>	SB 459  R ≥ 10m	RT 324	12,5-25				2 x 7	2 x 5,2	
		RC 446 ARC H ≤ 33,6 m	10 - 50				4 x 6,8	4 x 5	
	VB 663  R ≥ 13m	RT 443 A1 2V	15 - 30				4 x 5	4 x 3,7	
		RC 646 ARC H ≤ 43,9 m	10 - 50				4 x 6,8	4 x 5	
Réseau - <i>Netzstrom</i> - Mains supply - <i>Red</i>							380V - 50 HZ		
Puissance électrique nécessaire - <i>Anschlusswert</i> - Necessary electric power - <i>Potencia electrica necesaria</i>							RCS : 70 kVA PC : 50KVA		
Groupe électrogène - <i>Stromaggregat</i> - Generator set - <i>Grupo electrogeno</i>							.		

*Nous consulter - *Auf Anfrage* - Consult us - *Consultarnos*

NF E52081 - 82

POTAIN 

18, rue de Charbonnières - B.P. 173 F
69132 ECULLY Cedex - FRANCE
Tél. : 78.33.81.81 - Télex 330 179 - Télex Export 375 213 F

POTAIN GmbH 6082 MÖRFELDEN WALLDORF
Nordendstr. 79-87 - Postfach 420
Tél. : 06 105 704.0 - Télex 4.1857 45

TOPKIT G20/15C

Réf. 8513 KNJ 4