

# POTAIN

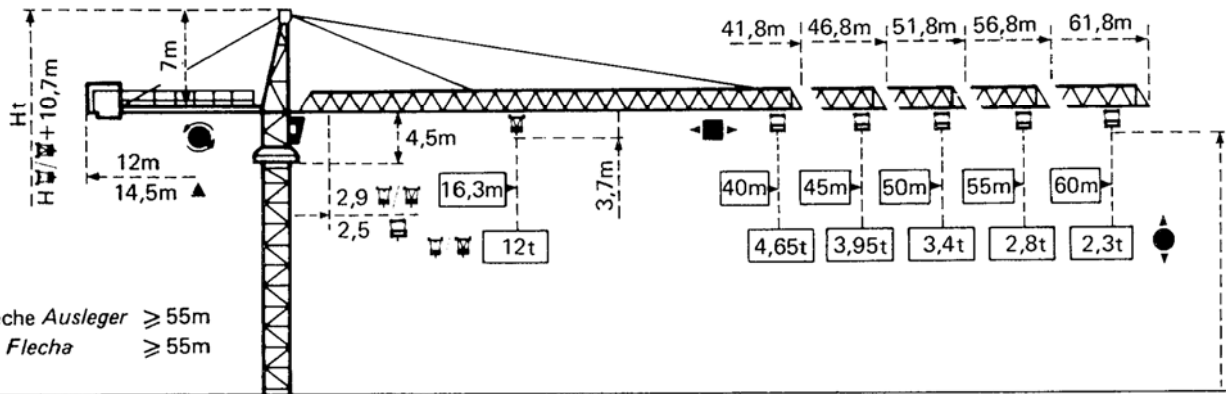
## TOPKIT H30/23C

Cotes

Abmessungen

Dimensions

Dimensiones



▲ Flèche Ausleger ≥ 55m  
▲ Jib Flecha ≥ 55m

Mătore Mast Mast Mástil

□ 1,6m x 1,6m

Mătore Mast Mast Mástil

□ 2m x 2m

PA 481

SB 481

BA 45A\*

PA 663

VB 663

Flèche Ausleger Jib Flecha ≤ 55m

$$H_{\text{total}} = H_{\text{tower}} + 1\text{m}$$

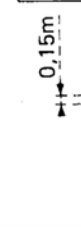
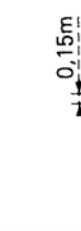
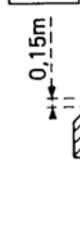
H	11
41,5	11
38,5	10
35,5	9
32,5	8
29,5	7
26,5	6
23,5	5
20,5	4
17,5	3
14,5	2
11,5	1

H	11
45,3	11
42,3	10
39,3	9
36,3	8
33,3	7
30,3	6
27,3	5
24,3	4
21,3	3
18,3	2
15,3	1

H	13
41,3	13
38,3	12
35,3	11
32,3	10
29,3	9
26,3	8
23,3	7

H	17
59,5	17
56,5	16
53,5	15
50,5	14
47,5	13
44,5	12
41,5	11
38,5	10
35,5	9
32,5	8
29,5	7
26,5	6
23,5	5
20,5	4
17,5	3
14,5	2
11,5	1

H	17
64,5	17
61,5	16
58,5	15
55,5	14
52,5	13
49,5	12
46,5	11
43,5	10
40,5	9
37,5	8
34,5	7
31,5	6
28,5	5
25,5	4
22,5	3
19,5	2
16,5	1



F = Réactions Eckdrücke Reactions Reacciones

F2	● 108t	■ 87t
F3	● 70t	■ 54t
	47t	

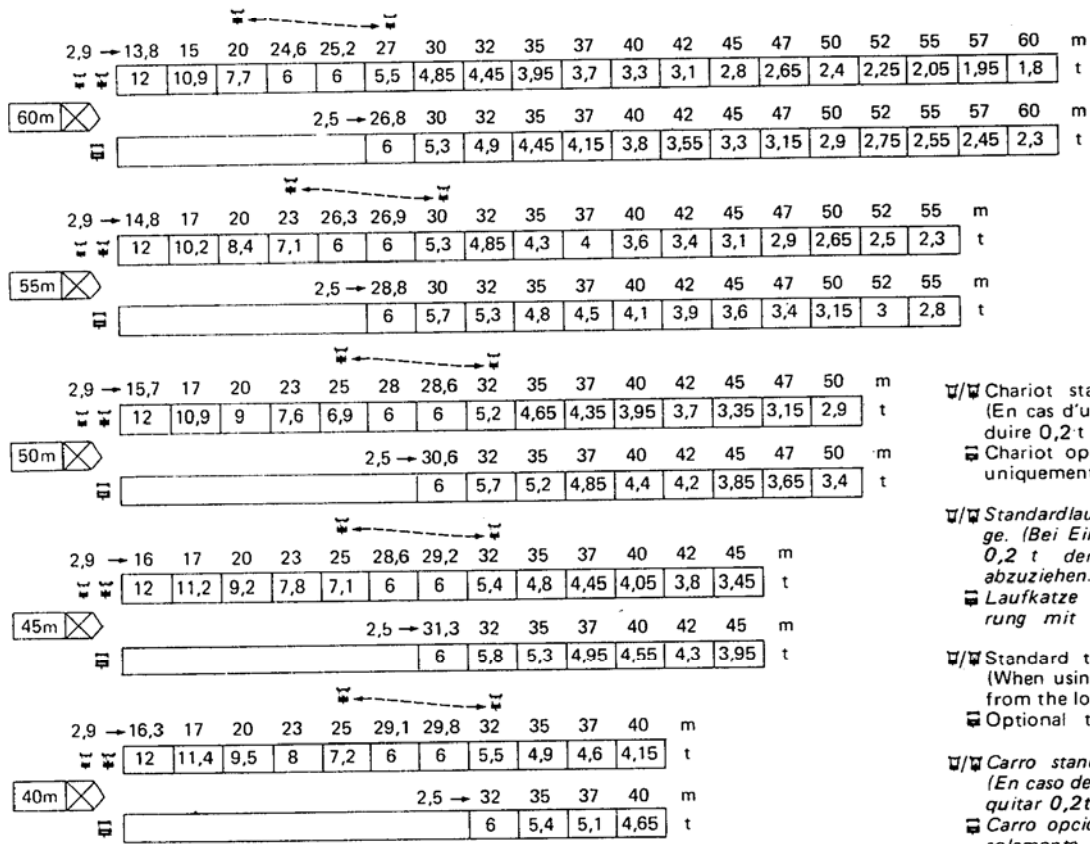
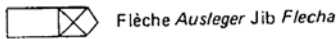
F1	● 71t	■ 65t
	55t	

Voir ci-contre \*  
Siehe nebenstehend  
See opposite  
Ver página opuesta

F2	● 121t	■ 162t
F3	● 72t	■ 120t
	59t	

F1	● 89t	■ 110t
	72t	

**Courbes de charges Lastkurven Load diagrams Curvas de cargas**



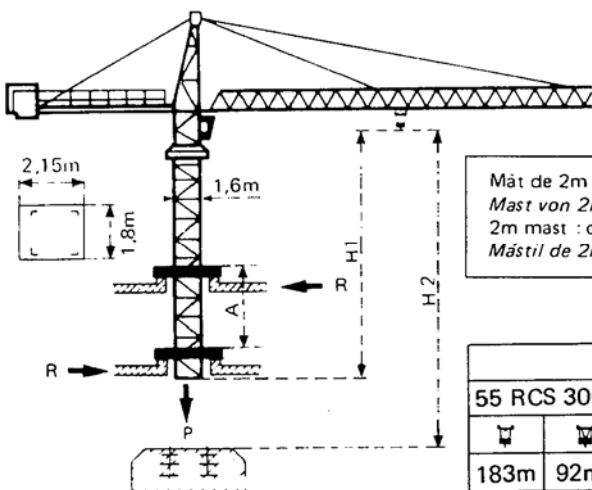
☐/☐ Chariot standard 2/4 brins (En cas d'utilisation ☐ déduire 0,2t aux charges ☐ ).  
 ☐ Chariot optionnel 2 brins uniquement.

☐/☐ Standardlaufkatze 2/4 Stränge. (Bei Einsatz von ☐ ist 0,2 t der Lasten von ☐ abzuziehen.  
 ☐ Laufkatze in Sonderausführung mit nur 2 Strängen.

☐/☐ Standard trolley 2/4 fall (When using ☐ subtract 0,2t from the loads ☐ ).  
 ☐ Optional trolley fall only.

☐/☐ Carro standard 2/4 ramales (En caso de utilizacion ☐ quitar 0,2t de las cargas ☐ ).  
 ☐ Carro opcional en 2 ramales solamente.

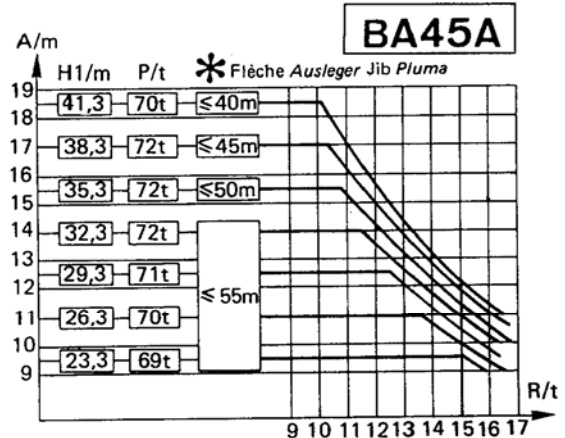
**Télescopage sur dalles - Ketterkrane im Gebäude  
 Climbing crane - Telecopage gruas trepadoras**



Mât de 2m : nous consulter  
 Mast von 2m : Auf Anfrage  
 2m mast : consult us  
 Mástil de 2m : consultarnos

H2	
55 RCS 30C	33 PC 30C
☐	☐
183m	92m
☐	☐
204m	102m

A Distance entre cadres A Abstand zwischen den Rahmen  
 H1 Hauteur grue H1 Kranhöhe  
 P Poids de la grue P Krangewicht (In Betrieb)  
 R Réaction horizontale R Horizontalkräfte




















\* Contre-flèche 14,5m impérative pour toute version en BA45A  
 Eine Gegenauslegerlänge von 14,5m ist für jede Auslegerausführung bei BA45A unbedingt erforderlich.  
 It is essential to have a counter-jib of 14,5 m for all jib versions in case of BA45A.  
 Contra flecha 14,5m longitud imperativa para toda versión de flecha en BA45A.




A Distance between collars A Distancia entre marcos  
 H1 Crane height H1 Altura grúa  
 P Crane weight P. Peso de la grúa (In servicio)  
 R Horizontal reaction R Reacción horizontal




● En service ● In Betrieb ● In service ● En servicio  
 ■ Hors service ■ Ausser Betrieb ■ Out of service ■ Fuera de servicio











☐ A vide sans lest avec ☐ Ohne Last und Ballast ☐ Without load and ballast ☐ Sin cargas, sin lastre, con flecha et hauteur maximum. ☐ mit Maximalausleger und Maximalhöhe. ☐ with longest jib and maximum height. ☐ flecha y altura máxima.

**Mécanismes    Antriebe    Mechanisms    Mecanismos**

				m/min	t		ch-PS hp	kW			
Levage Heben Hoisting Elevación	55 RCS 30C 			0 → 34	6	365m > 365m *	55	40,5			
				0 → 68	3						
				0 → 17	12						
				0 → 34	6						
	33 PC 30C 			3,5	6				408m > 408m *	33	24
				19	6						
				38	3						
				1,75	12						
			9,5	12							
			19	6							

Distribution - <i>Katzfahren</i> Trolleying - <i>Distribución</i>		6 DPC 4	7,5 30 60			6	4,4
--	---	---------	-----------------	---	--	---	-----

Orientation - <i>Schwenken</i> Slewing - <i>Orientación</i>		OMD 55	0 → 0,7 tr/min U/min-rpm			2 x 8	2 x 5,9
--	---	--------	--------------------------------	--	---	-------	---------

Translation Kranfahren Travelling Traslación	SB 481  R ≥ 10m	RT 324	12,5 - 25			2 x 7	2 x 5,2	
		RC 446 ARC H ≤ 33,3m	10 - 50			4 x 6,8	4 x 5	
		VB 663  R ≥ 13m	RT 443 A1 2V	15 - 30			4 x 5	4 x 3,7
		RC 646 ARC H ≤ 43,5m	10 - 50			4 x 6,8	4 x 5	

Réseau - <i>Netzstrom</i> - Mains supply - <i>Red</i>	380 V - 50 HZ
Puissance électrique nécessaire - <i>Anschlusswert</i> - Necessary electric power - <i>Potencia electrica necesaria</i>	PC : 60 kVA RCS : 80 kVA
Groupe électrogène - <i>Stromaggregat</i> - Generator set - <i>Grupo electrogeno</i>	*

\*Nous consulter - *Auf Anfrage* - Consult us - *Consultarnos*

NF E52081 - 82

# POTAIN

18, rue de Charbonnières - B.P. 173 F  
 69132 ECULLY Cedex - FRANCE  
 Tél. : 78.33.81.81 - Télex 330 179 - Télex Export 375 213 F

POTAIN GmbH 6082 MÖRFELDEN WALLDORF  
 Nordendstr. 79-87 - Postfach 420  
 Tél. : 06 105 704.0 - Télex 4.1857 45

**TOPKIT H30 / 23C**

Réf. 8513 KNQ 7