

# POTAIN

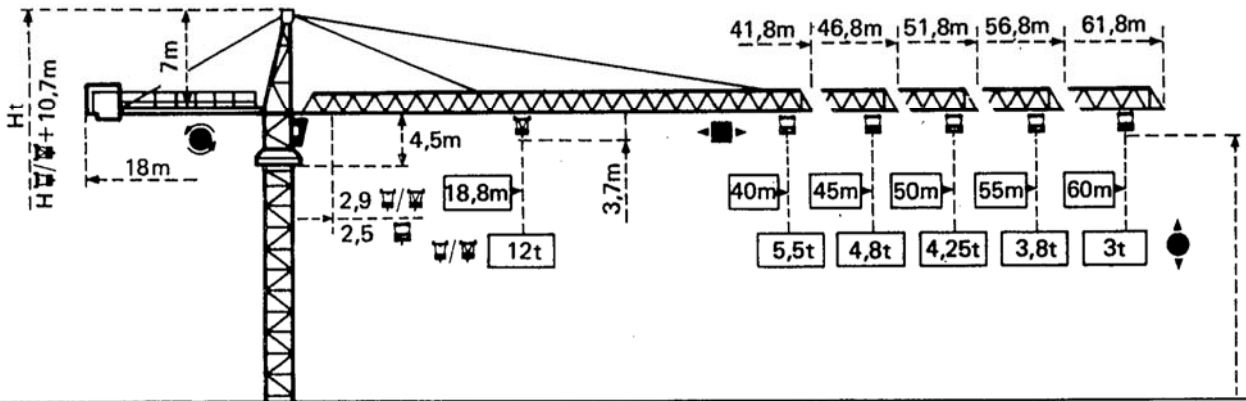
## TOPKIT H30/30C

Cotes

Abmessungen

Dimensions

Dimensiones



Măture Mast Mast Mástil

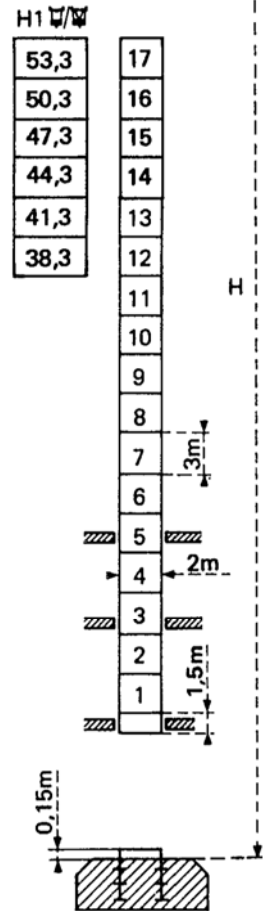
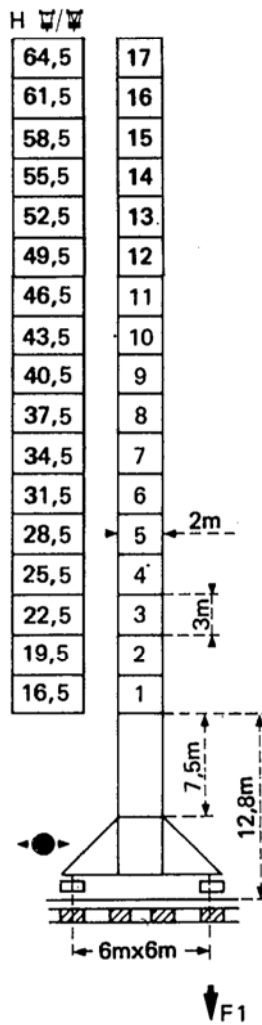
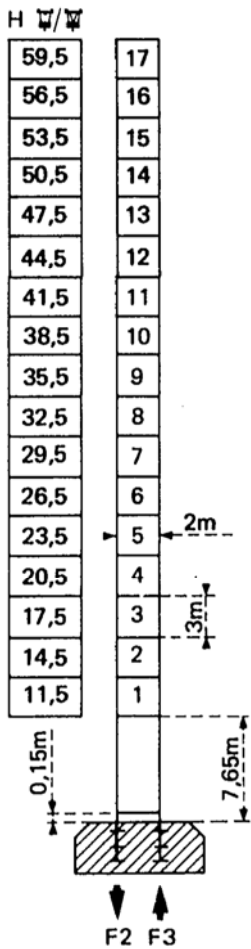
2m x 2m

PA 682

VB682

BA65A

$H_{\square} = H_{\square/\square} + 1m$



F = Réactions Eckdrücke Reactions Reacciones

F2	● 129t	■ 158t
F3	● 84t	■ 119t
	61t	

F1	● 86t	■ 106t
	74t	

Voir ci-contre  
Siehe nebenstehend  
See opposite  
Ver página opuesta

**Courbes de charges**

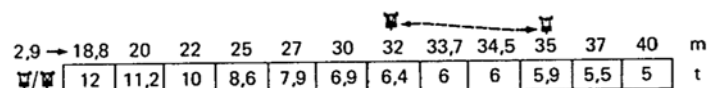
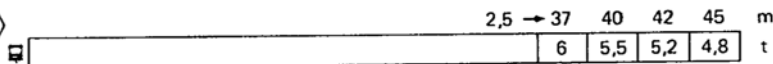
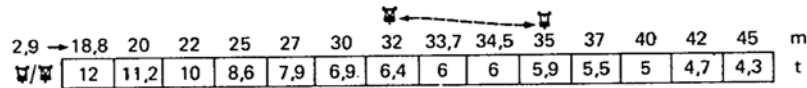
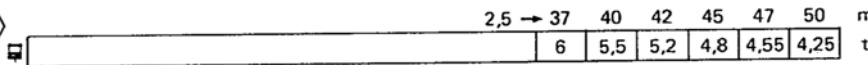
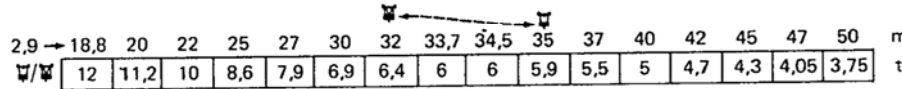
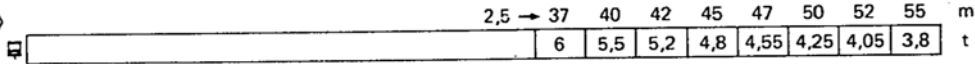
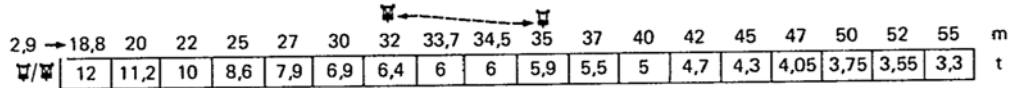
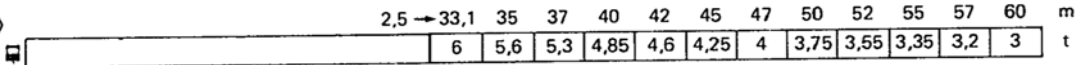
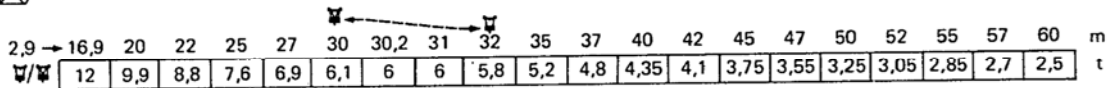
**Lastkurven**

**Load diagrams**

**Curvas de cargas**



Fleche Ausleger Jib Flecha



W/W Chariot standard 2/4 brins (En cas d'utilisation W déduire 0,2t aux charges W ).  
 W Chariot optionnel 2 brins uniquement.

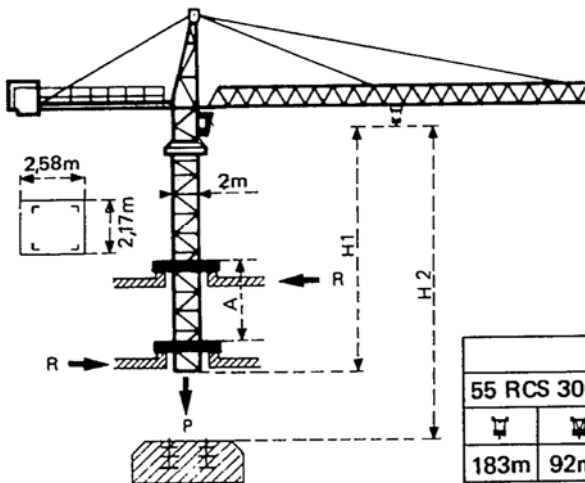
W/W Standardlaufkatze 2/4 Stränge. (Bei Einsatz von W ist 0,2 t der Lasten von W abzuziehen.  
 W Laufkatze in Sonderausführung mit nur 2 Strängen.

W/W Standard trolley 2/4 fall (When using W subtract 0.2t from the loads W ).  
 W Optional trolley fall only.

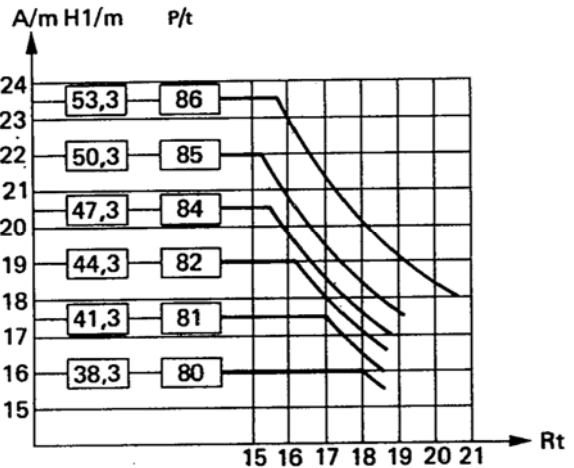
W/W Carro standard 2/4 ramales (En caso de utilización W quitar 0,2t de las cargas W ).  
 W Carro opcional en 2 ramales solamente.

**Télescopage sur dalles - Ketterkrane im Gebäude**  
**Climbing crane - Telecopage gruas trepadoras**

**BA65A**















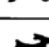



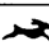








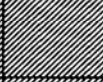


H2			
55 RCS 30C		33 PC 30C	
W	W	W	W
183m	92m	204m	102m



- |                                 |                               |                             |                                 |
|---------------------------------|-------------------------------|-----------------------------|---------------------------------|
| A Distance entre cadres         | A Abstand zwischen den Rahmen | A Distance between collars  | A Distancia entre marcos        |
| H1 Hauteur grue                 | H1 Kranhöhe                   | H1 Crane height             | H1 Altura grúa                  |
| P Poids de la grue (En service) | P Krangewicht (In Betrieb)    | P Crane weight (In service) | P Peso de la grúa (En servicio) |
| R Réaction horizontale          | R Horizontalkräfte            | R Horizontal reaction       | R Reacción horizontal           |

- |  |  |   |  |
|--|--|---|--|
| ● En service                                       | ● In Betrieb   | ● In service  | ● En servicio  |
| ■ Hors service                                     | ■ Ausser Betrieb   | ■ Out of service  | ■ Fuera de servicio                                  |
| ⊕ A vide sans lest avec flèche et hauteur maximum. | ⊕ Ohne Last und Ballast mit Maximalausleger und Maximalhöhe. | ⊕ Without load and ballast with longest jib and maximum height. | ⊕ Sin cargas, sin lastre con flecha y altura máxima. |

Mécanismes *Antriebe* Mechanisms *Mecanismos*

				m/min	t		ch-PS hp	kW
Levage Heben Hoisting Elevación	55 RCS 30C 			0 → 34	6	365m > 365m	55	40,5
				0 → 68	3			
				0 → 17	12			
				0 → 34	6			
	33 PC 30C 			3,5	6	408m > 408m	33	24
				19	6			
				38	3			
				1,75	12			
				9,5	12			
				19	6			
Distribution - <i>Katzfahren</i> Trolleying - <i>Distribución</i>		6 DPC 4	7,5 30 60			6	4,4	
Orientation - <i>Schwenken</i> Slewing - <i>Orientación</i>		OMD 55	0 → 0,7 tr/min U/min-rpm			2 x 8	2 x 5,9	
Translation Kranfahren Travelling Traslación	VB 682  R ≥ 13m	RT 443 A1 2V	15 - 30			4 x 5	4 x 3,7	
		RC 646 ARC H ≤ 43,5m	10 - 50			4 x 6,8	4 x 5	
Réseau - <i>Netzstrom</i> - Mains supply - <i>Red</i>							380 V - 50 HZ	
Puissance électrique nécessaire - <i>Anschlusswert</i> - Necessary electric power - <i>Potencia electrica necesaria</i>							PC : 60 kVA RCS : 80 kVA	
Groupe électrogène - <i>Stromaggregat</i> - Generator set - <i>Grupo electrogeno</i>							*	

\*Nous consulter - *Auf Anfrage* - Consult us - *Consultarnos*

NF 52081 - 82

# POTAIN

18, rue de Charbonnières - B.P. 173 F  
 69132 ECULLY Cedex - FRANCE  
 Tél. : 78.33.81.81 - Télex 330 179 - Télex Export 375 213 F  
 POTAIN GmbH 6082 MÖRFELDEN WALLDORF  
 Nordendstr. 79-87 - Postfach 420  
 Tél. : 06 105 704.0 - Télex 4.1857 45

**TOPKIT H30 / 30C**

Réf. 8516 KOB 6