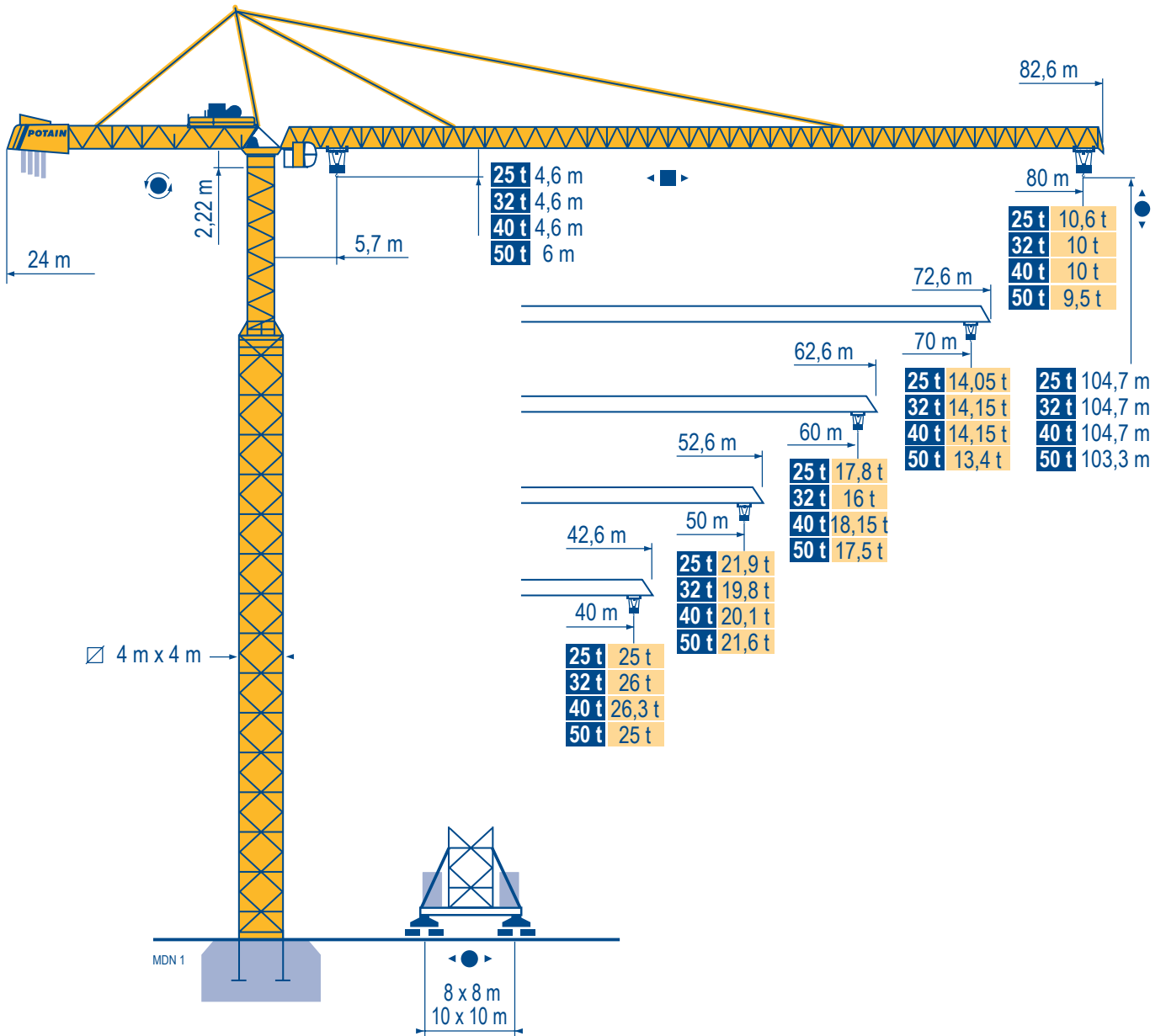


MD 1100



Mat / Réactions 4 m x 4 m

Maste /
Eckdrücke

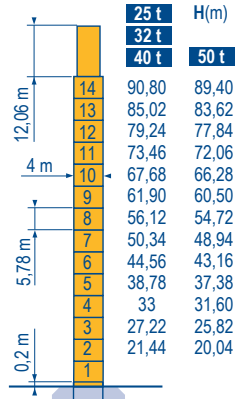
Masts /
Reactions

Mástil /
Reacciones

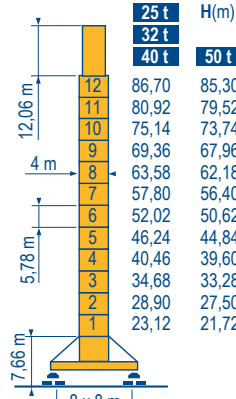
Torre / Reazioni

Tramo /
Reacções

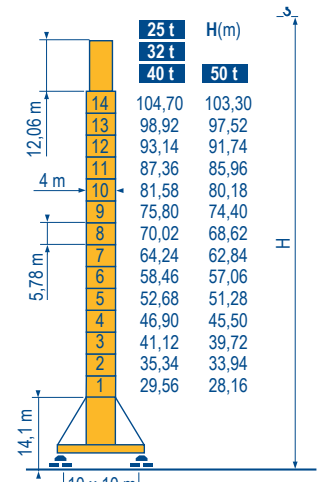
MDN 1



| Model | Weight (t) | Capacity (t) |
|-------|------------|--------------|
| F2 | 25 t | 247 t |
| | 32 t | 251 t |
| | 40 t | 251 t |
| | 50 t | 287 t |
| F3 | 25 t | 118 t |
| | 32 t | 130 t |
| | 40 t | 130 t |
| | 50 t | 136 t |
| ▲ | | 196 t |



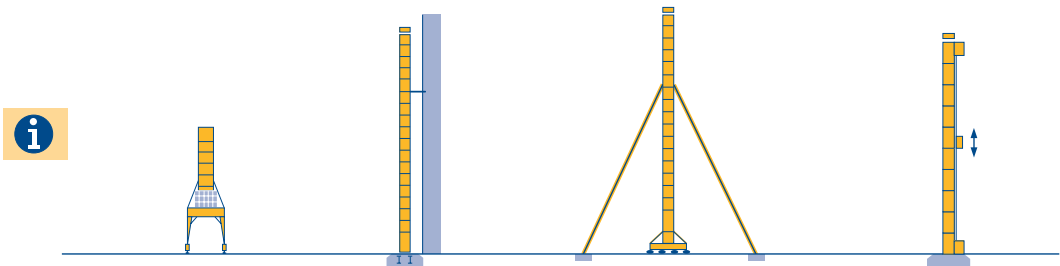
| Model | Weight (t) | Capacity (t) |
|-------|------------|--------------|
| F1 | 25 t | 195 t |
| | 32 t | 191 t |
| | 40 t | 191 t |
| | 50 t | 221 t |
| ▲ | | 218 t |



| Model | Weight (t) | Capacity (t) |
|-------|------------|--------------|
| F1 | 25 t | 197 t |
| | 32 t | 195 t |
| | 40 t | 195 t |
| | 50 t | 231 t |
| ▲ | | 258 t |

Autres implantations
Aufstellmöglichkeiten
Mounting possibilities
Otras implantaciones
Altre postazioni
Outras implantações

MDN 1



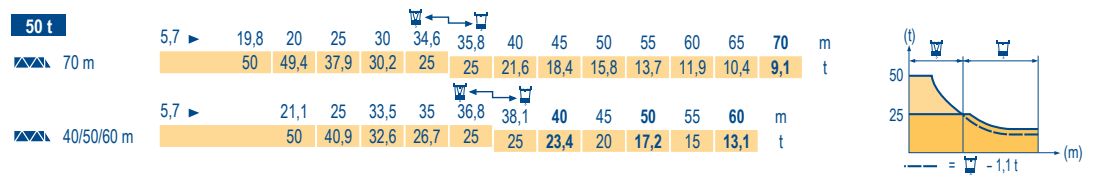
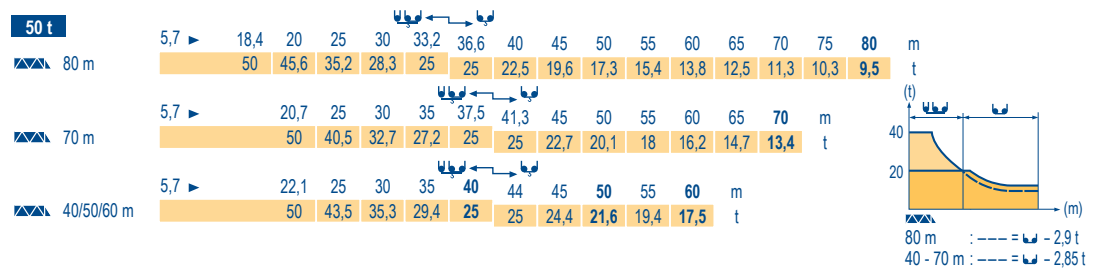
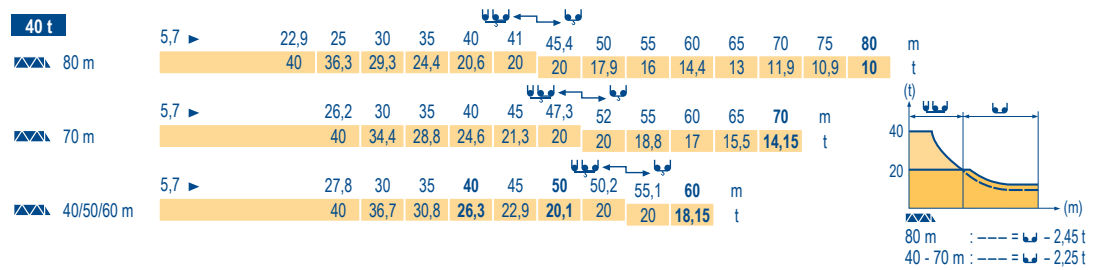
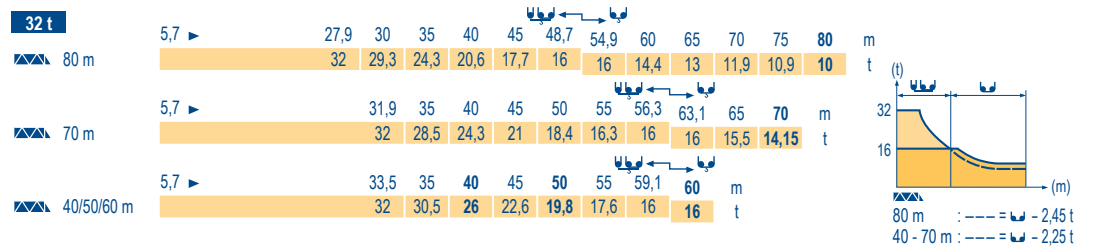
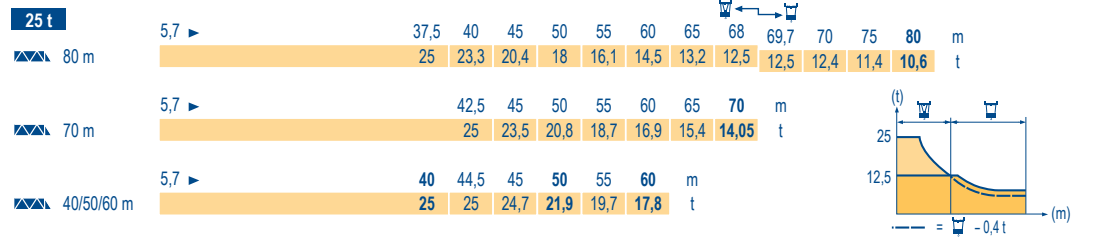
MD 1100

POTAIN

| F | D | GB | E | I | P |
|--|---|--|---|--|--|
| ● | ● | ● | ● | ● | ● |
| ■ | ■ | ■ | ■ | ■ | ■ |
| ▲ | ▲ | ▲ | ▲ | ▲ | ▲ |
| Réactions en service | Reaktionskräfte in Betrieb | Reactions in service | Reacciones en servicio | Reazioni in servizio | Reacções em serviço |
| Réactions hors service | Reaktionskräfte außer Betrieb | Reactions out of service | Reacciones fuera de servicio | Reazioni fuori servizio | Reacções fora de serviço |
| A vide sans lest (ni train de transport) avec flèche et hauteur maximum. | Ohne Last, Ballast (und Transportachse), mit Maximalausleger und Maximalhöhe. | Without load, ballast (or transport axles), with maximum jib and maximum height. | Sin carga, sin lastre, (ni tren de transporte), flecha y altura máxima. | A vuoto, senza zavorra (ne assali di trasporto) con braccio massimo e altezza massima. | Sem carga (nem trem de transporte)- sem lastro com lança e altura máximas. |

Courbes de charges
Lastkurven
Load diagrams
Curvas de cargas
Curve di carico
Curva de cargas

MDN 1



MD 1100

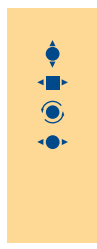


| | | | | | | |
|----------|----------------|-------------|------------|--------------|--------------|---------------|
| i | F | D | GB | E | I | P |
| | Nous consulter | Auf Anfrage | Consult us | Consultarnos | Consultateci | Consultar-nos |

Mécanismes
Antriebe
Mechanisms
Mecanismos
Meccanismi
Mecanismos

MDN 2

| i | | | U | | | | | UU | | | | | ch - PS hp | kW | |
|------------------------|------------------|------------------------|---|---|---|-----|-----|--------|----------|----|--|--|---------------|----|--|
| ▲ ● ▼ | 25 t | 150 LCC 63 | m/min t | 40 → 48 → 60 → 80 → 96 12,5 9,4 6,25 3,1 1,6 | 20 → 24 → 30 → 40 → 48 25 18,8 12,5 6,2 3,2 | 150 | 110 | 520 m | | | | | | | |
| | 32 t | 150 LCC 80 M6 | m/min t | 32 → 38 → 48 → 64 → 76 16 12 8 4 2 | 16 → 19 → 24 → 32 → 38 32 24 16 8 4 | 150 | 110 | 316 m | | | | | | | |
| | 32 t | 250 LCC 80 | m/min t | 46 → 68 → 86 → 108 → 122 16 12 8 4 2 | 23 → 34 → 43 → 54 → 61 32 24 16 8 4 | 250 | 180 | 620 m | | | | | | | |
| | 40 t | 250 LCC 100 | m/min t | 40 → 52 → 66 → 84 → 96 20 15 10 5 2,5 | 20 → 26 → 33 → 42 → 48 40 30 20 10 5 | 250 | 180 | 488 m | | | | | | | |
| | 50 t | 250 LCC 125 M5 | m/min t | 36 → 47 → 60 → 75 → 85 25 18,75 12,5 6,25 3,1 | 18 → 23,5 → 30 → 37,5 → 42,5 50 37,5 25 12,5 6,2 | 250 | 180 | 410 m | | | | | | | |
| | 50 t | 250 LCC 125 | m/min t | 30 → 44 → 56 → 72 → 80 25 18,75 12,5 6,25 3,1 | 15 → 22 → 28 → 36 → 40 50 37,5 25 12,5 6,2 | 250 | 180 | 690 m | | | | | | | |
| ◀ ■ ▶ | 25 t | 15 DVF 16 | m/min | 0 → 47 (25 t) - 0 → 63 (12,5 t) - 0 → 76 (6,25 t) - 0 → 100 (3,1 t) | | | | | 15 | 11 | | | | | |
| | 32 t | | m/min | 0 → 33 (32 t) - 0 → 50 (16 t) - 0 → 67 (8 t) - 0 → 100 (2,5 t) | | | | | | | | | | | |
| | 40 t | | m/min | 0 → 33 (40 t) - 0 → 50 (20 t) - 0 → 67 (10 t) - 0 → 100 (2,5 t) | | | | | | | | | | | |
| | 50 t | 25 DVF 25 | m/min | 0 → 33 (50 t) - 0 → 66 (25 t) - 0 → 80 (12,5 t) | | | | | 25 | 18 | | | | | |
| | RVF 192 Optima + | tr/min U/min rpm | 0 → 0,6 | | | | | 2 x 15 | 2 x 11 | | | | | | |
| | | m/min | 8,5 - 17 | | | | | 12 x 3 | 12 x 2,2 | | | | | | |
| CEI 38 | | | IEC 38 | | | kVA | | | | | | | | | |
| 400 V (+6% -10%) 50 Hz | | | 150 LCC : 185 kVA 250 LCC / 15 DVF : 320 kVA 250 LCC / 25 DVF : 330 kVA | | | | | | | | | | | | |



- | | | | | | |
|--------------------|-------------------|-----------------------|-----------------------|--------------------------|----------------------|
| F Levage | D Heben | GB Hoisting | E Elevación | I Sollevamento | P Elevação |
| Distribution | Katzfahren | Trolleying | Distribución | Distribuzione | Distribuição |
| Orientation | Schwenken | Slewing | Orientación | Rotazione | Rotação |
| Translation | Kranfahren | Travelling | Traslación | Traslazione | Translação |

Document commercial non contractuel. Pour toute information technique se référer à la notice correspondante. Unverbindliches Vertriebsdokument. Für technische Informationen, siehe die entsprechenden Anweisungen. This commercial document is not legally binding. For any technical information, please refer to the corresponding instructions. Documento comercial no contractuel. Para cualquier información técnica, ver la noticia correspondiente. Documento commerciale non vincolante, per tutte le informazioni tecniche fare riferimento al catalogo istruzioni. Documento comercial não contractuel. Para qualquer informação técnica complementar consultar as respectivas instruções.



Manitowoc
Crane CARE

Americas
Tel : +1 888 479 7278
Tel : +1 717 593 2000

Europe - Middle East - Africa
Tel : +33 (0) 4 72 81 50 00
Tel : +44 (0) 191 522 2000

Asia - Pacific
Tel : +65 6264 1188
Fax : +65 6862 4142

www.manitowoccrane.com

POTAIN

Manitowoc Crane Group

18, rue de Charbonnières - B.R.173
69132 ECULLY Cedex - France

Tél. : +33 (0) 4 72 18 20 20
Fax. : +33 (0) 4 72 18 20 00
www.manitowoccrane.com

MD 1100
Réf. 2006 08 MDN 2

Copyright.Reproduction interdite © POTAIN 2006

Réalisation Sedoc